



Add PKCS#11 Module in Mozilla Firefox on Windows

V 1.1

26/08/2015
English

Disclaimer

This document may not be reproduced as a whole or parts of it without the prior written and explicit consent of LuxTrust S.A. Third party copyrights may exist for parts of this documentation. LuxTrust S.A. declines all responsibility for direct, indirect, special, incidental or consequential damages to hardware or other damages somehow related to or resulting from the execution of any advice given in this document. This document is provided “as is” and no provision is made in terms of fitness for a particular purpose or applicability. By making use of this document the user accepts using it to its own risk and understands that this document could not be provided without such limitations.

I.1 Elements you need previously on your PC

- Install the LuxTrust Middleware according to your PC : <https://drivers.luxtrust.lu>

II Configure Mozilla Firefox

Click on 3 lines on the right of your page and click on the menu « Options » (see red arrow in Figure 1) and select « Options » (see in red circle in Figure 1)

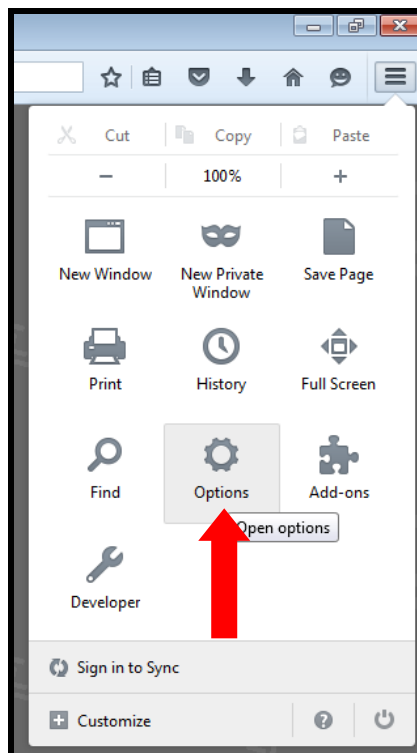


Figure 1

II.1 Enter to the device manager

To enter to the device manager, please select « Advanced » (see first blue arrow in figure 2). Push on the button « Security Devices » (see red arrow in figure 2).

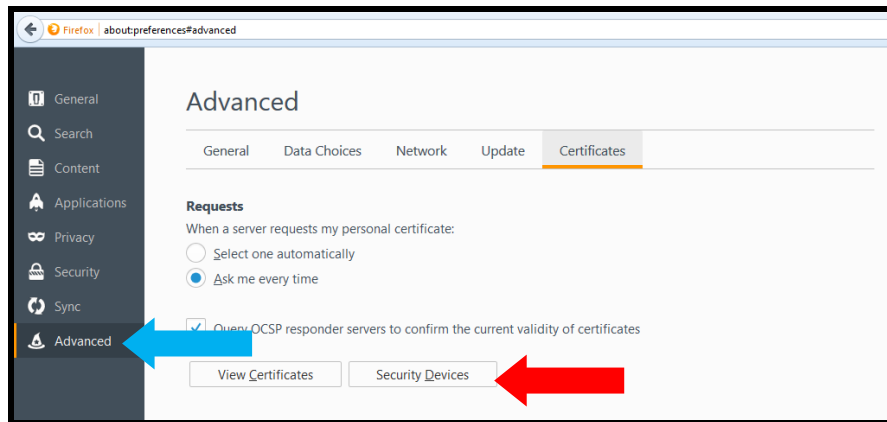


Figure 2

II.2 Select the PKCS#11 Module

Click on the « Load » (see red arrow in figure 3).

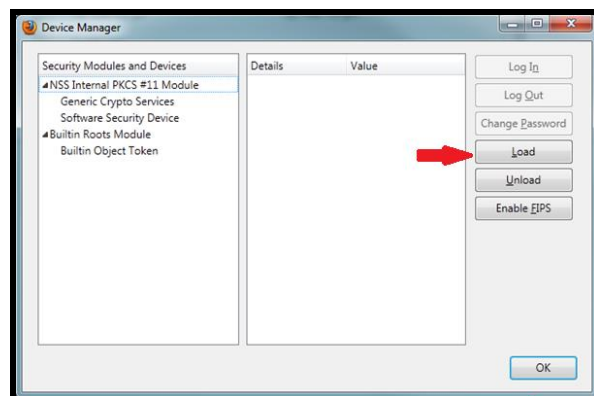


Figure 3

The following window will appear at your screen :

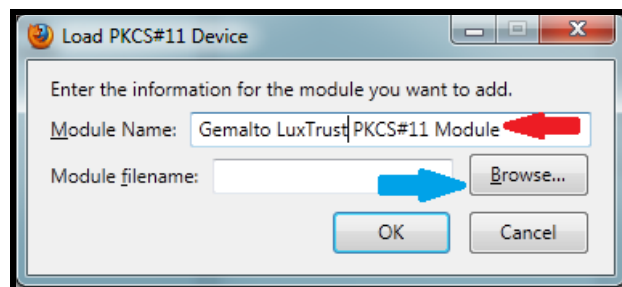


Figure 4

In the Field named « Module Name » type in « Gemalto PKCS#11 Module » (see red arrow in figure 4) and click on « Browse... » (see blue arrow in figure 4).

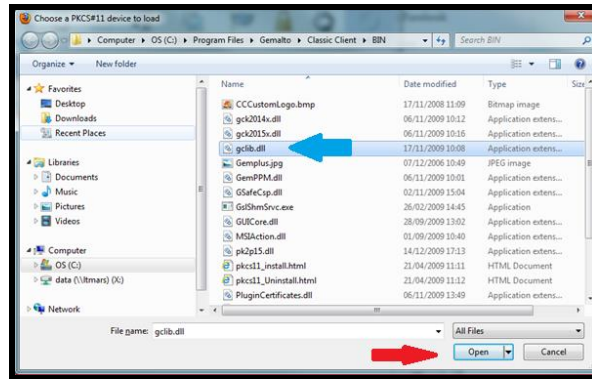


Figure 5

Attention !

Customers using a 64bit PC, please select the “Program Files X86” to look for the Gemalto Folder.

If your Gemalto Middleware has been installed automatically, you will find it under « **C:\Program Files\Gemalto\Classic Client\BIN** » and select the file « **gclib.dll** » (see blue arrow in figure 5). Click on : « Open » (see red arrow in figure 5) to validate your choice.

Close the Window « Load PKCS#11 Device » by clicking on « OK » (see red arrow in figure 6).

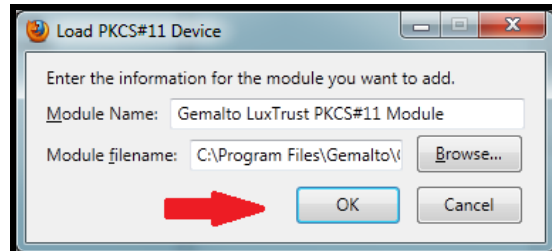


Figure 6

II.3 Close the « Device manager » and « Options »

Close the « Device Manager » périphériques) et « Options » en cliquant sur « OK » (voir flèches rouges sur les figures 7 et 8).

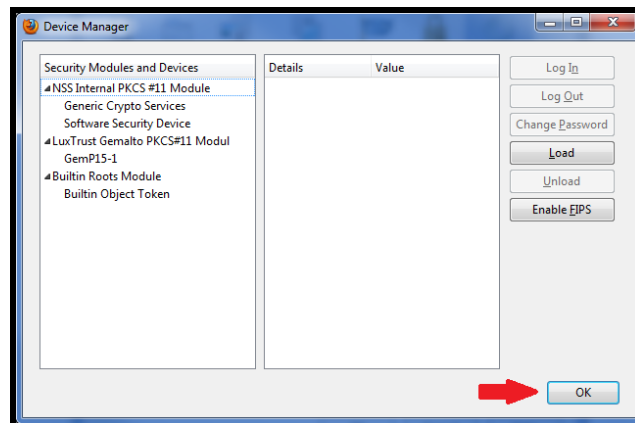
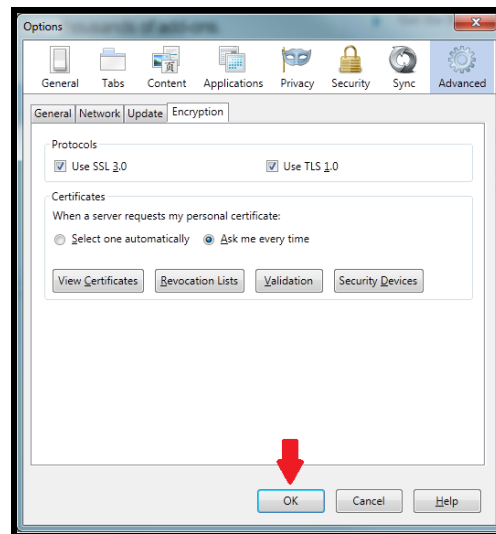


Figure 7**Figure 8**

III Problems while adding the PKCS#11 Module

III.1 Impossible to add the module

If you have this Problem, please pull out the used product, Smartcard or Signing Stick.

Close all the Firefox sessions and restart it and try to add the module.