



Add PKCS#11 Module in Firefox under Mac OS

V 1.1

16/12/2015
English

Disclaimer

This document may not be reproduced as a whole or parts of it without the prior written and explicit consent of LuxTrust S.A. Third party copyrights may exist for parts of this documentation. LuxTrust S.A. declines all responsibility for direct, indirect, special, incidental or consequential damages to hardware or other damages somehow related to or resulting from the execution of any advice given in this document. This document is provided “as is” and no provision is made in terms of fitness for a particular purpose or applicability. By making use of this document the user accepts using it to its own risk and understands that this document could not be provided without such limitations.

I.1 Elements which must be installed before starting

- Install the LuxTrust Middleware matching to your Mac: <https://drivers.luxtrust.lu> .
- Check if the Firefox is already installed on your Mac, if not, so use this link to install it: www.mozilla.org .

Configure Mozilla Firefox

I.2 Open Mozilla Firefox

Click on 3 lines on the right of your page and click on the menu « Options » (see red arrow in Figure 1) and select « Options » (see in red circle in Figure 1)

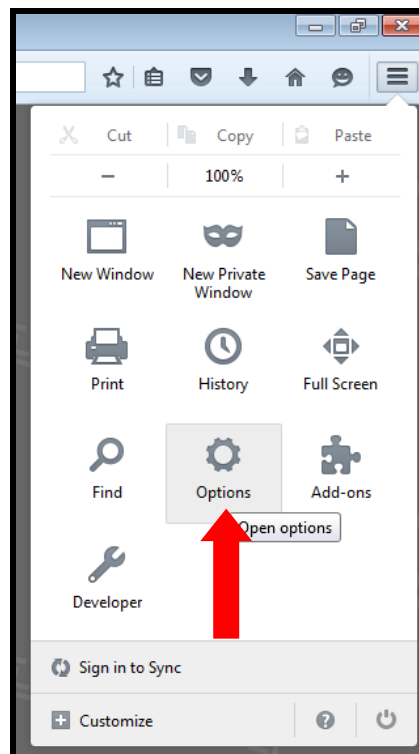


Figure 1

I.3 Enter to the device manager

To enter to the device manager, please select « Advanced » (see first blue arrow in figure 2). Push on the button « Security Devices » (see red arrow in figure 2).

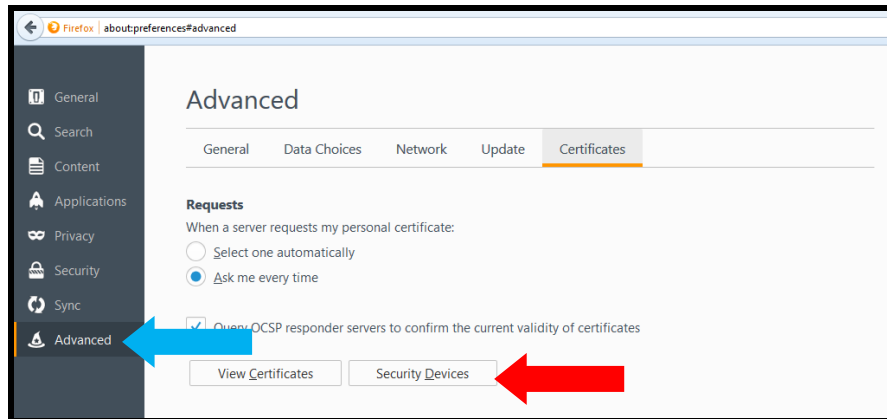


Figure 2

I.4 Add the module PKCS#11

Klick on: « Load » (see red arrow in figure 3).

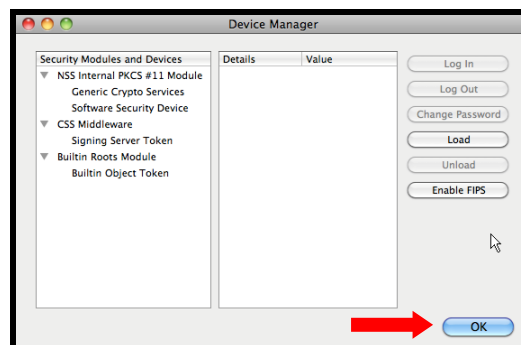


Figure 3

The following window will appear on your screen:

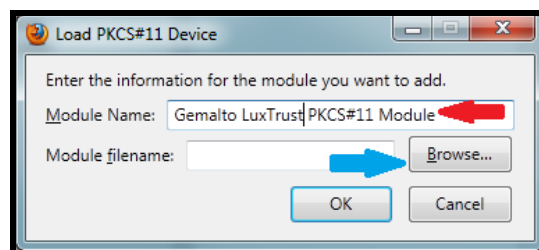


Figure 4

In the field « Module Name » enter «Gemalto PKCS#11 Module » (*see red arrow in figure 4*) and enter in the next line called : Module Filename , this path:

MacOSX 10.9.5, 10.10: /usr/lib/ClassicClient/libgclib.dylib

MacOSX >= 10.11: /usr/local/lib/ClassicClient/libgclib.dylib

Close the window « Load PKCS#11 Device » by clicking on « OK » and close also the other windows.

II Problems while adding the PKCS#11 Module

II.1 Impossible to add the module

If you have this Problem, please pull out the used product, Smartcard or Signing Stick.

Close all the Firefox sessions and restart it and try to add the module.