



Sign e-mails in Windows Outlook 2010 with Signing Stick or Smartcard

V 1.0

16/06/2011
english

Disclaimer

This document may not be reproduced as a whole or parts of it without the prior written and explicit consent of LuxTrust S.A. Third party copyrights may exist for parts of this documentation. LuxTrust S.A. declines all responsibility for direct, indirect, special, incidental or consequential damages to hardware or other damages somehow related to or resulting from the execution of any advice given in this document. This document is provided “as is” and no provision is made in terms of fitness for a particular purpose or applicability. By making use of this document the user accepts using it to its own risk and understands that this document could not be provided without such limitations.

<u>Table of Contents</u>

I.1	First check	3
I.2	Set the Security Settings	4
I.3	Inside Windows Outlook 2010	6

I.1 First check

You have to check first if your LuxTrust Product (Signing Stick or Smartcard) is connected to your PC.

To check this, please open up the Taskbar in the button of your screen and show all details (red circle, figure 1).

Then search for the icon of Gemalto, which is called “Gemplus...”(in the black circle). If you see exactly the same icon as here, the middleware Gemalto is running.

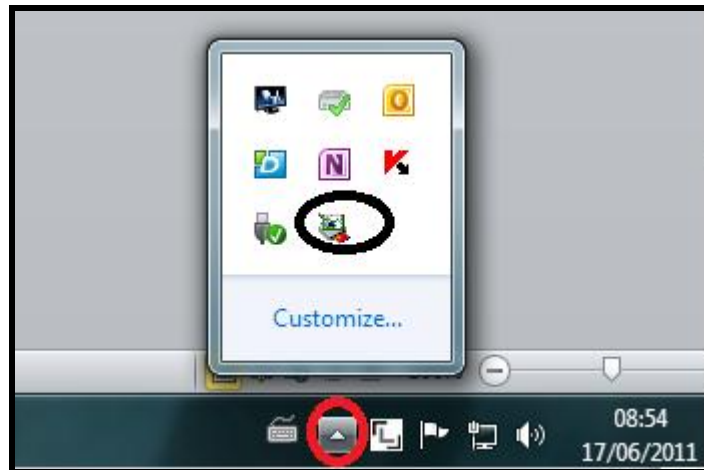


Figure 1

If you see this icon:



Please click with the right mouse button on it and the following menu will be opened. In the menu please click once with the left mouse button on “Start/Pause” to start the middleware.(black circle Figure 2).

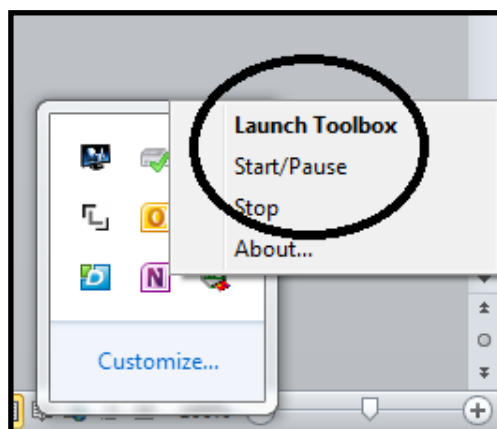


Figure 2

I.2 Set the Security Settings

Please click with the left mouse button on the arrow showing down (Figure 3) to open up the menu, here click on “More Commands...”

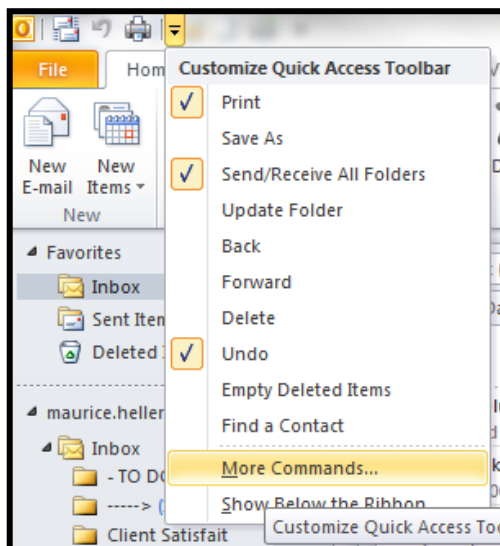


Figure 3

Outlook Options is opening, select here “Trust Center” and then “Trust Center Settings” (black circle figure 4)

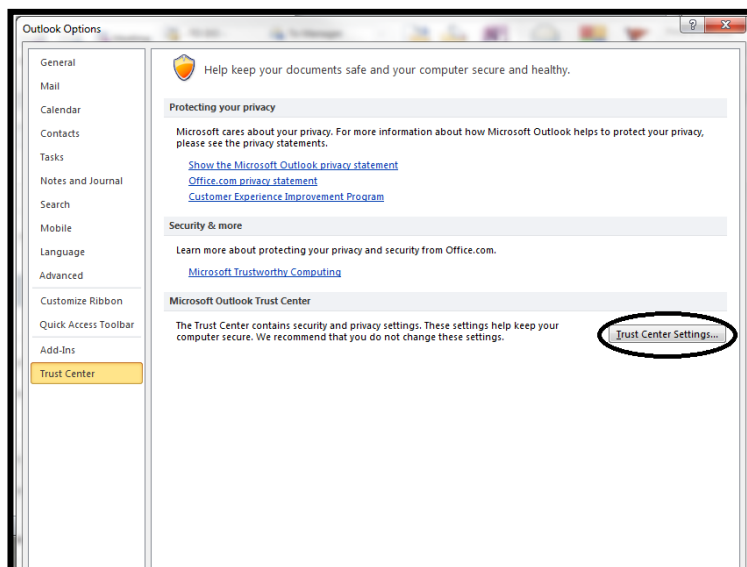


Figure 4

In the Trust Center, please select with your mouse, “E-mail Security”, then click on “Settings” (black circle, figure 5)

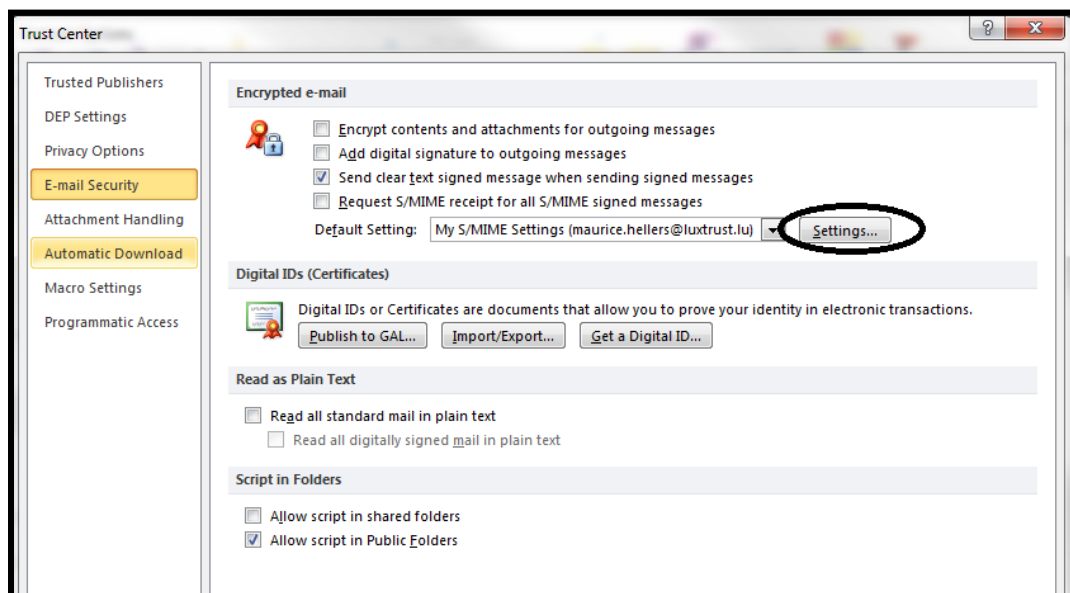


Figure 5

In the new windows called “Change Security Settings”, select your MY S/MIME..... of the list and validate with “ok”. Please close all windows.

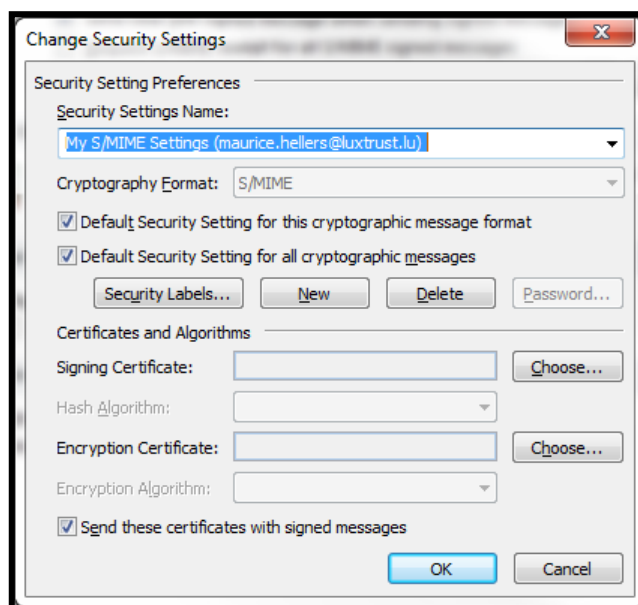



Figure 6

I.3 Inside Windows Outlook 2010

Open up a new email in your outlook.

Select the menu “options” and click on “sign” (figure7, black circle) enter e-mail text after that click on send. Once you have clicked on “Send”, the system will ask you the Pin code of your Smartcard or Signing Stick. The e-mail will be send with your electronic signature. The e-mail will receive the following symbol  which stands for the electronic signature.

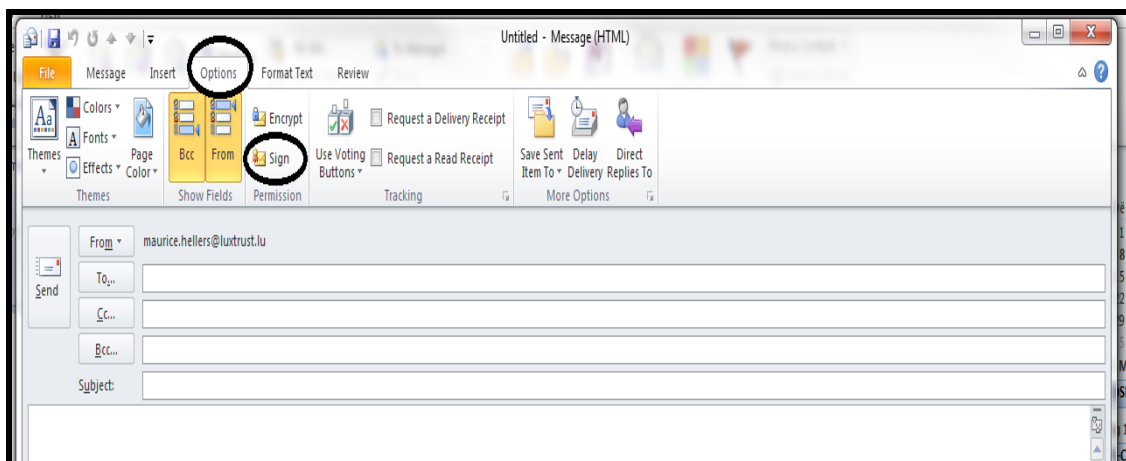


Figure 7