



Installation Guide for the LuxTrust Middleware under Mac OSX > 10.10.5

v0.3

05/09/2016

English

Disclaimer

This document may not be reproduced as a whole or parts of it without the prior written and explicit consent of LuxTrust S.A. Third party copyrights may exist for parts of this documentation. LuxTrust S.A. declines all responsibility for direct, indirect, special, incidental or consequential damages to hardware or other damages somehow related to or resulting from the execution of any advice given in this document. This document is provided “as is” and no provision is made in terms of fitness for a particular purpose or applicability. By making use of this document the user accepts using it to its own risk and understands that this document could not be provided without such limitations.

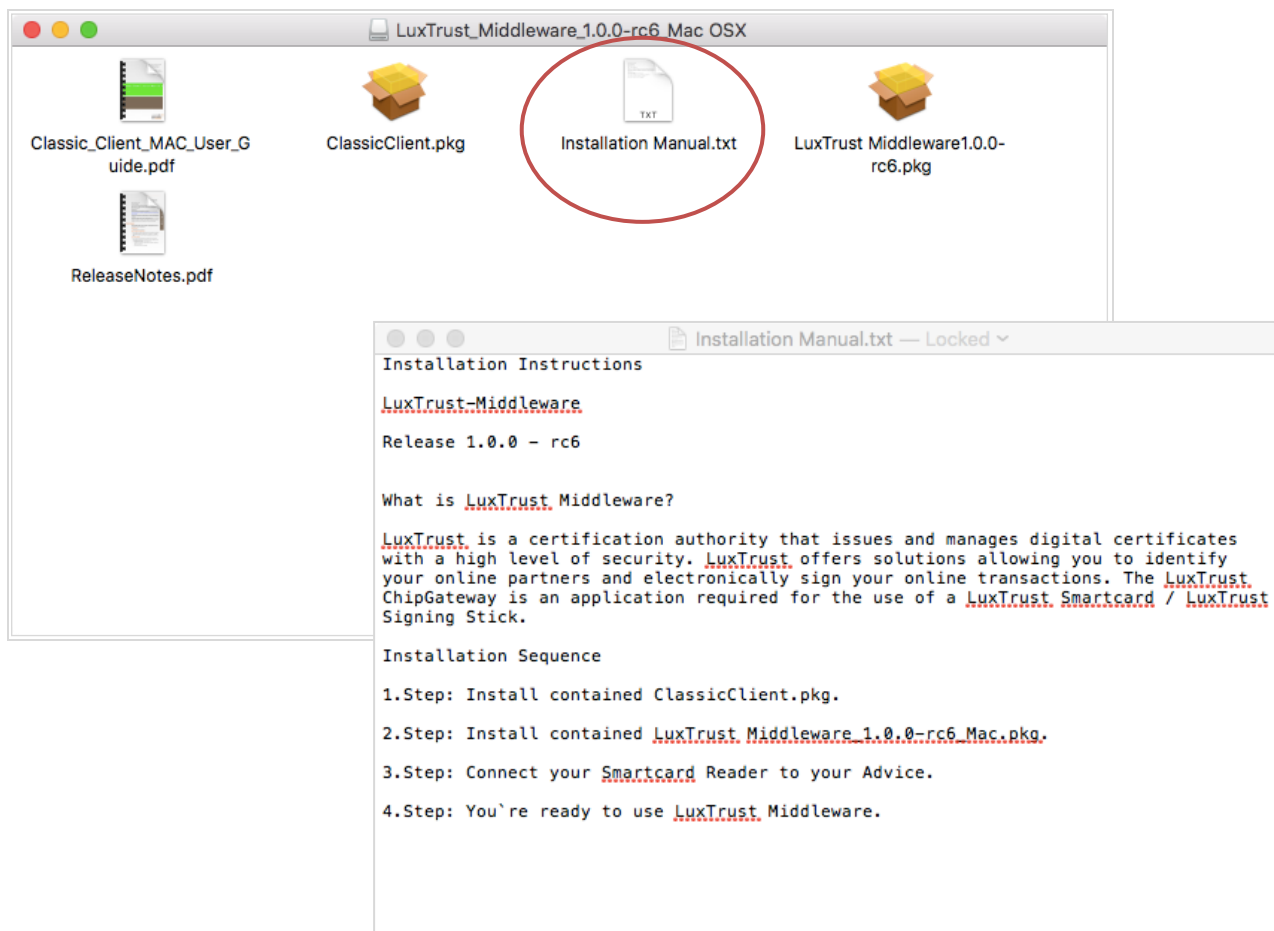
I.1 Conditions

In order to use the LuxTrust Middleware, you need to have met the following system conditions:

- Mac OS 10.10.5 upwards
- https://www.luxtrust.lu/en/product_page/61/#confs

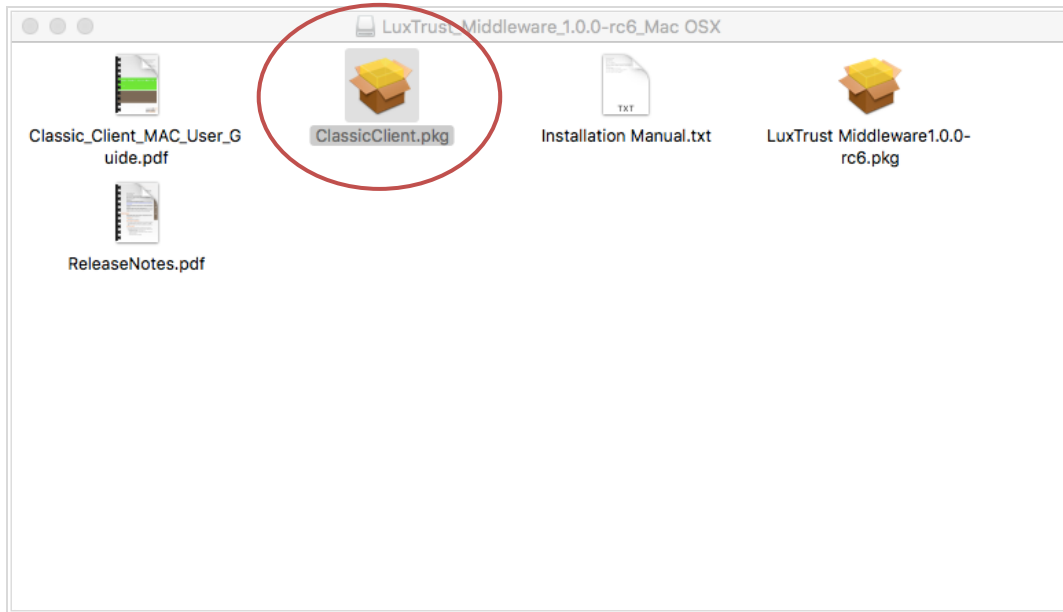
I.2 Installation of the LuxTrust Middleware:

- Download the LuxTrust Middleware from **drivers.luxtrust.lu**
- Unzip the content of the Package or leave it as-is
- For installation details, please read the file “Installation Manual.txt”.

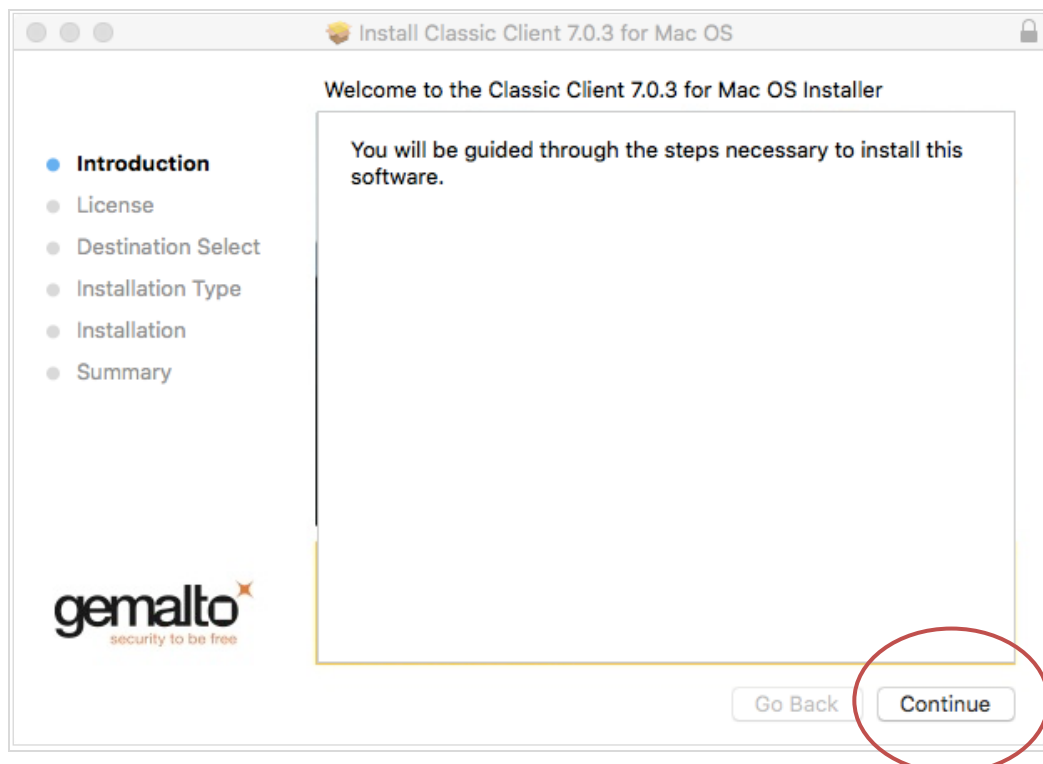


I.3 Installation of the contained ClassicClient.pkg

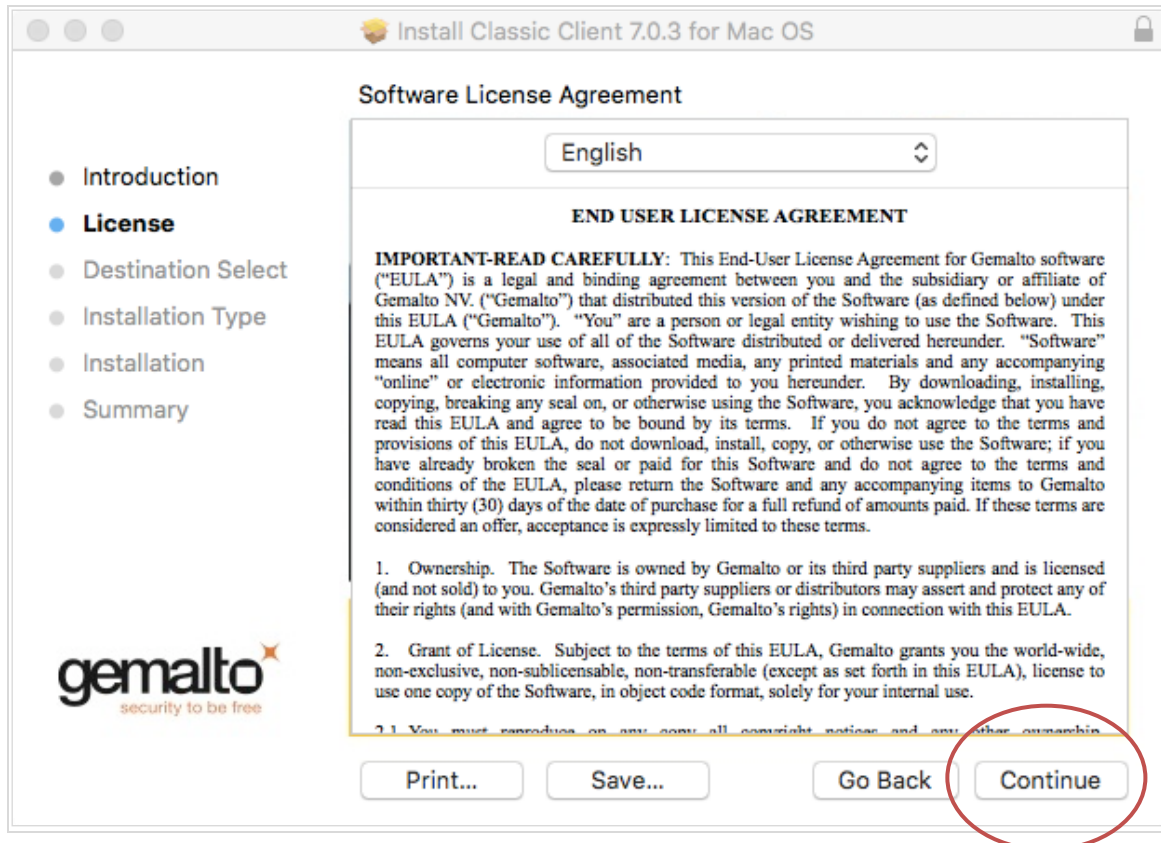
- Double click on the ClassicClient.pkg file



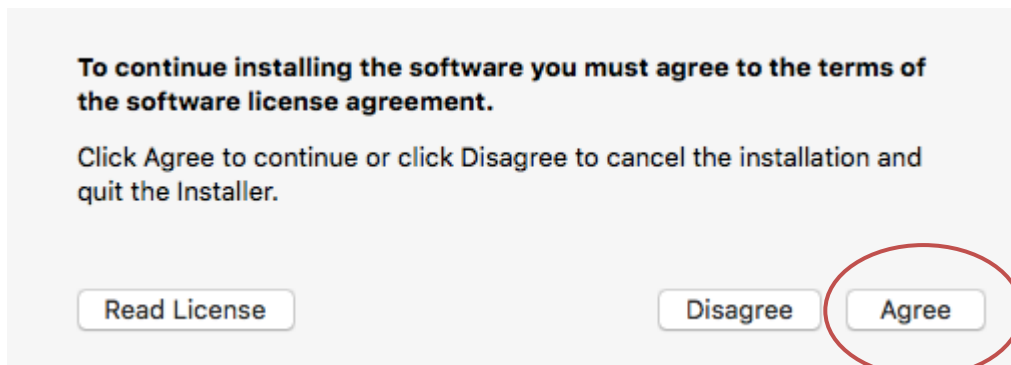
- Then click on “Continue”



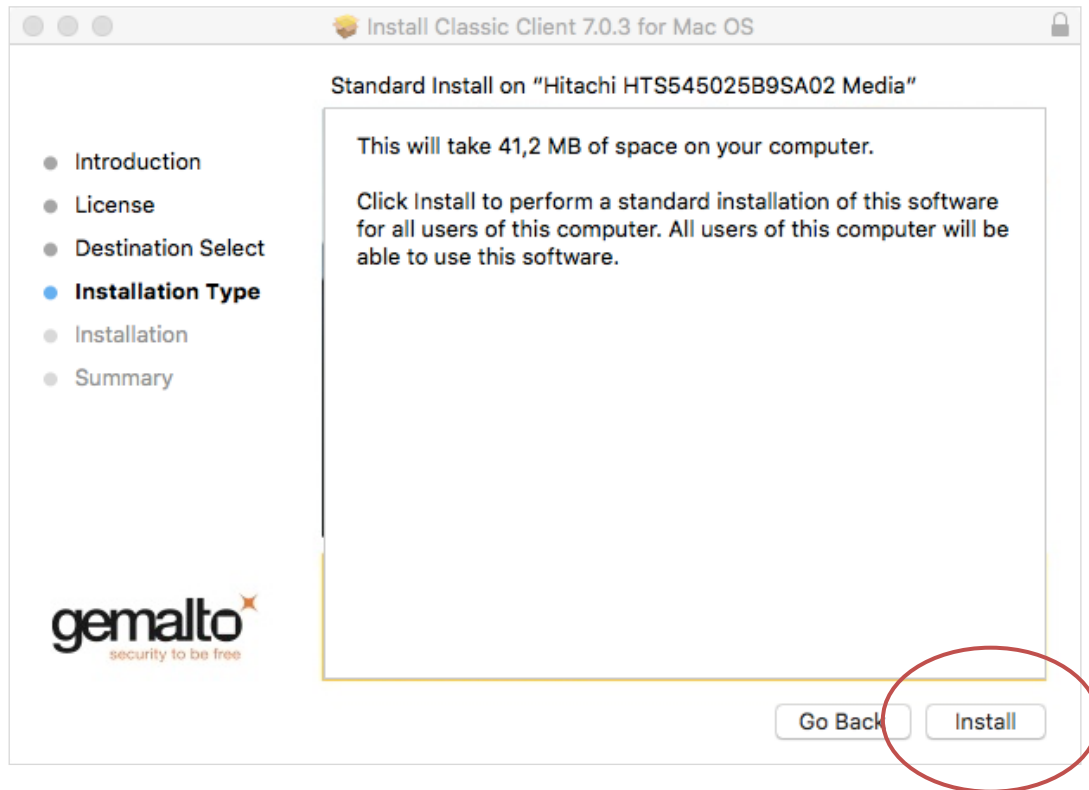
- Click again on “Continue”



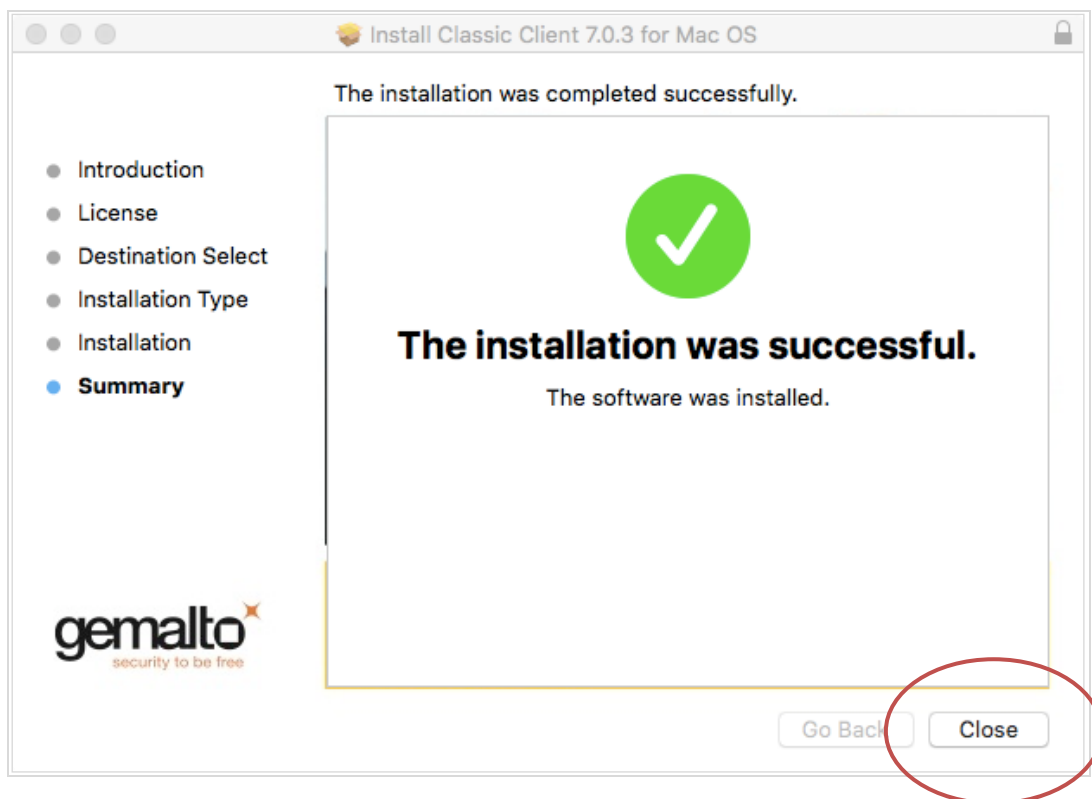
- Then confirm the terms of the software license agreement by clicking on “Agree”



- Then confirm by clicking on “Install”

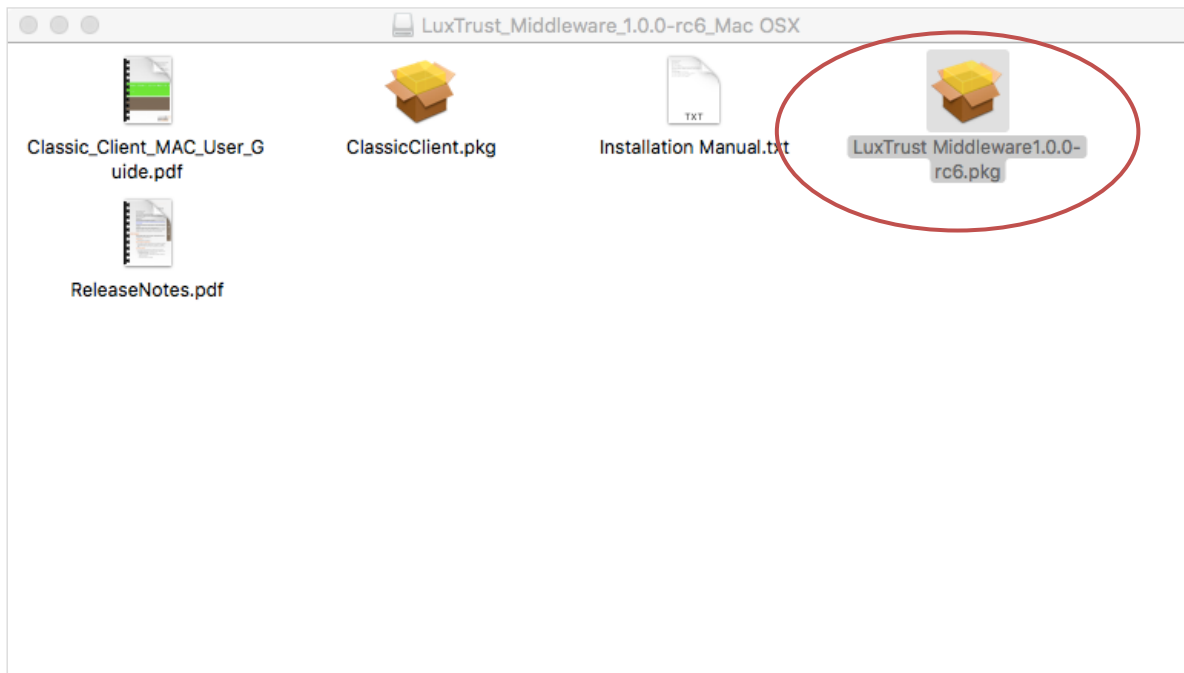


- Click on “Close” when the installation was successful.

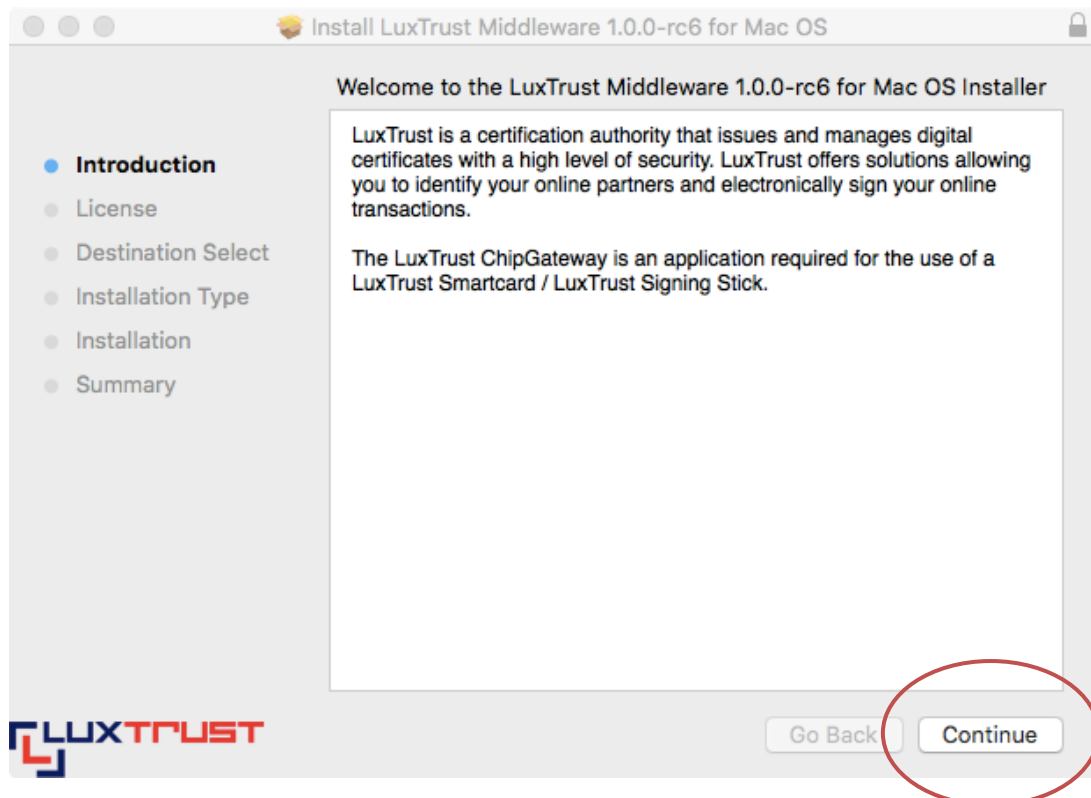


I.4 Installation the contained LuxTrust Middleware1.0.0-rcx.pkg

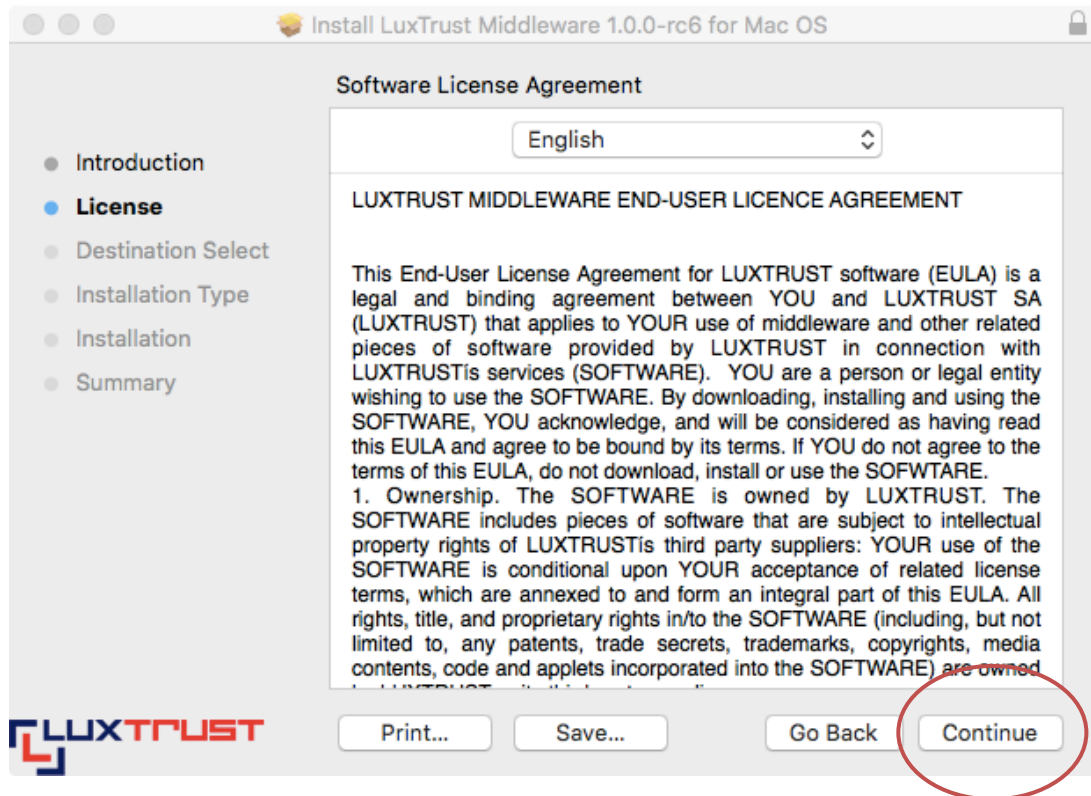
- Double click on the LuxTrust Middleware1.0.0-rcx.pkg file



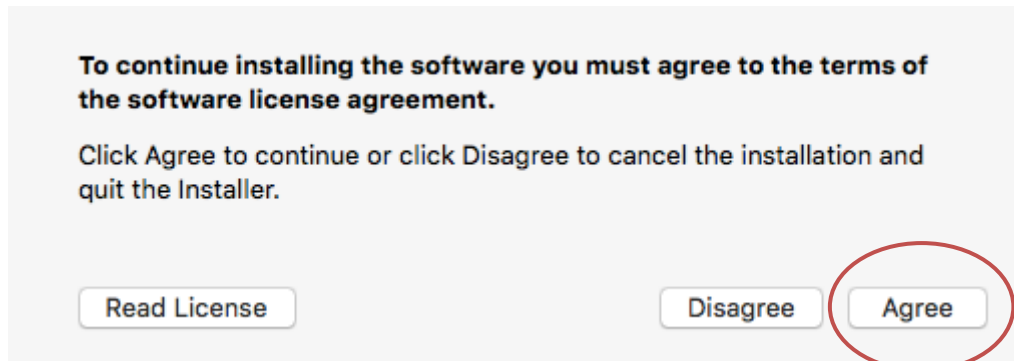
- Then click on “Continue”



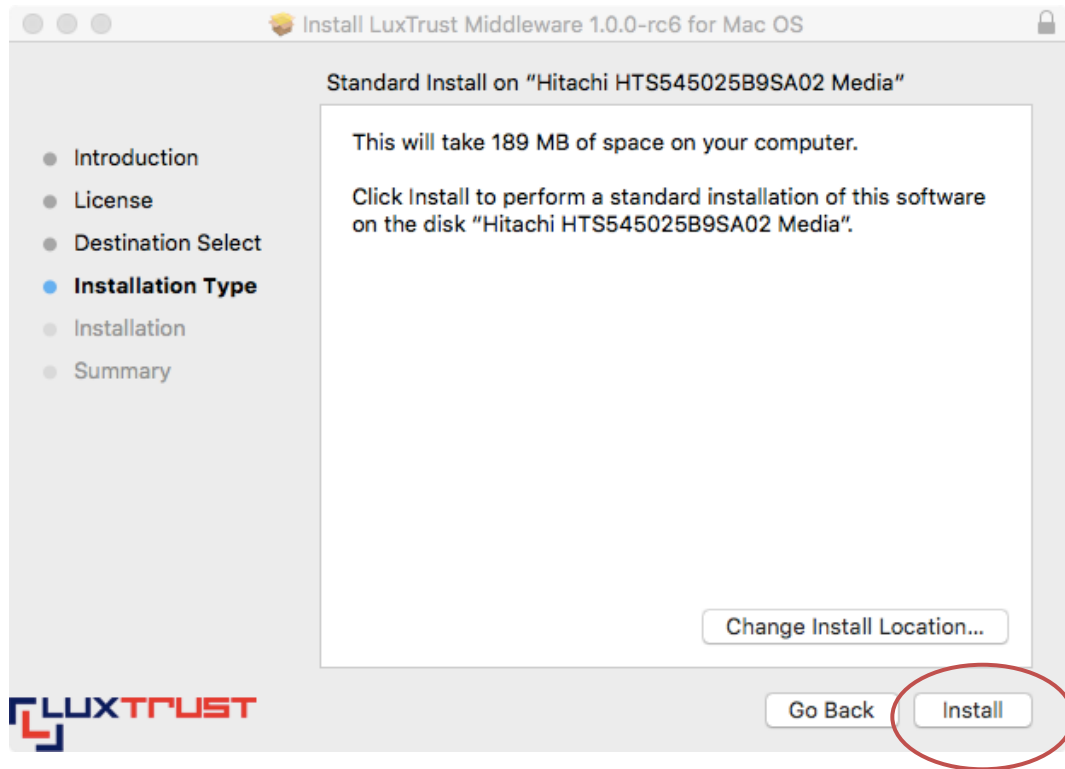
- Again click on “Continue”



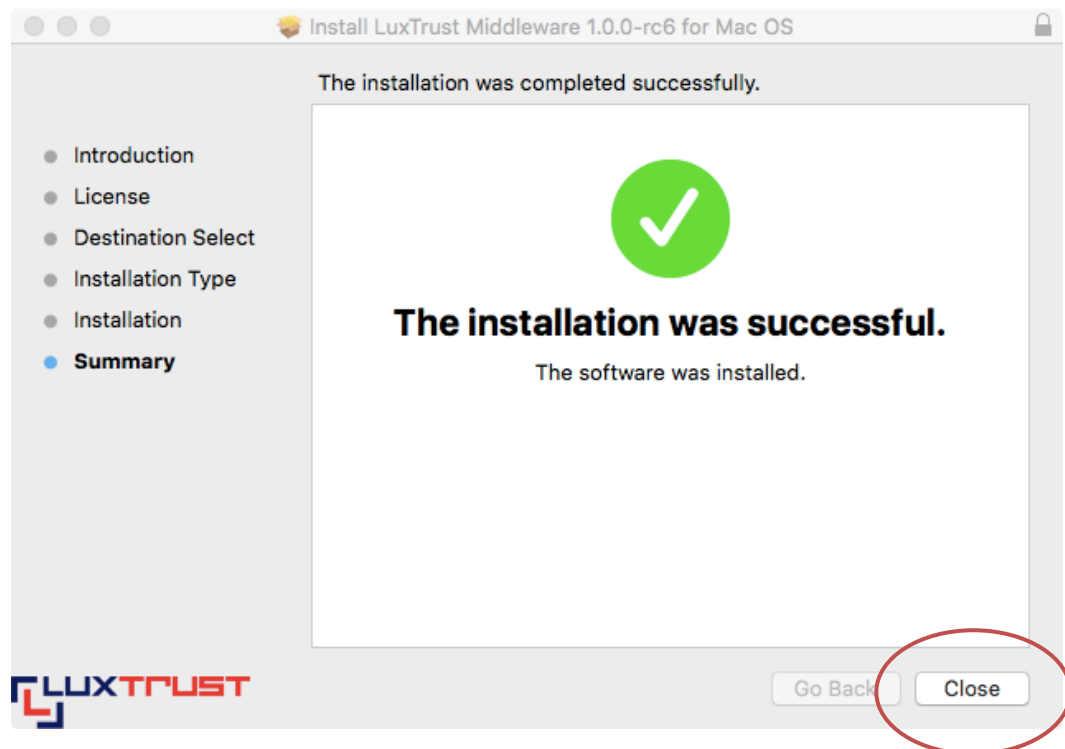
- Then confirm the terms of the software conditions by clicking on “Agree”.



- Click on “Install” to launch installation




- Click on “Close” when the installation was successful.




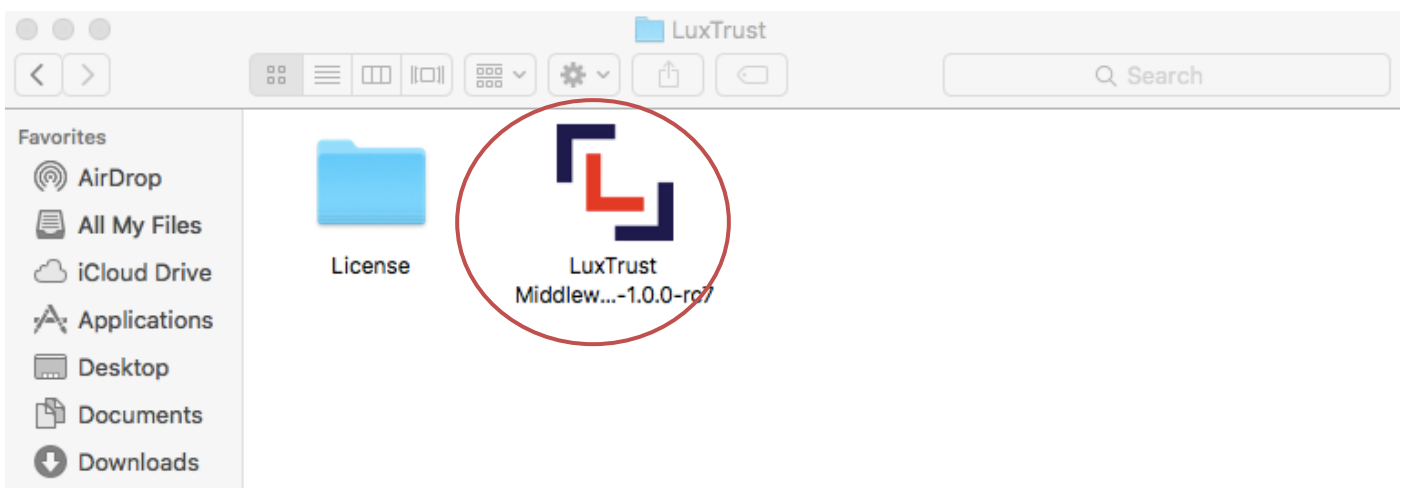
- Click on Close

I.5 Launch LuxTrust Middleware manually

- Autostart not yet available
- Click on the Finder  and then double click on Applications (left panel).
- Double click on the LuxTrust folder.



- To launch the LuxTrust Middleware double click on the LuxTrust Middleware icon. 



- LuxTrust Middleware icon  is now displayed in the dock.

I.6 Detection of a Smartcard / Signing stick

- Double Click on the LuxTrust Middleware icon  in the dock.



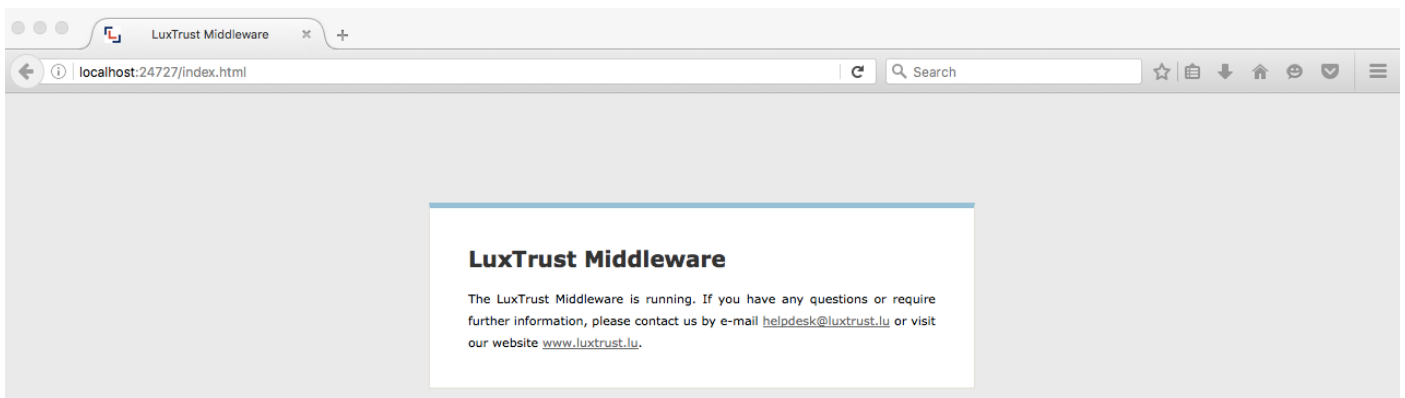
- Information is displayed on leftmost top of the screen.



I.7 Check if LuxTrust Middleware is running

- Check if the LuxTrust Middleware is running by typing in your internet browser

<http://localhost:24727/index.html>



I.8 Error logs / debugging

If errors occur please send the file “ChipGateway.log” to us by mail to helpdesk@luxtrust.lu .

➔ The file path is dependent on your session / login (\$users). So please adapt the path accordingly!

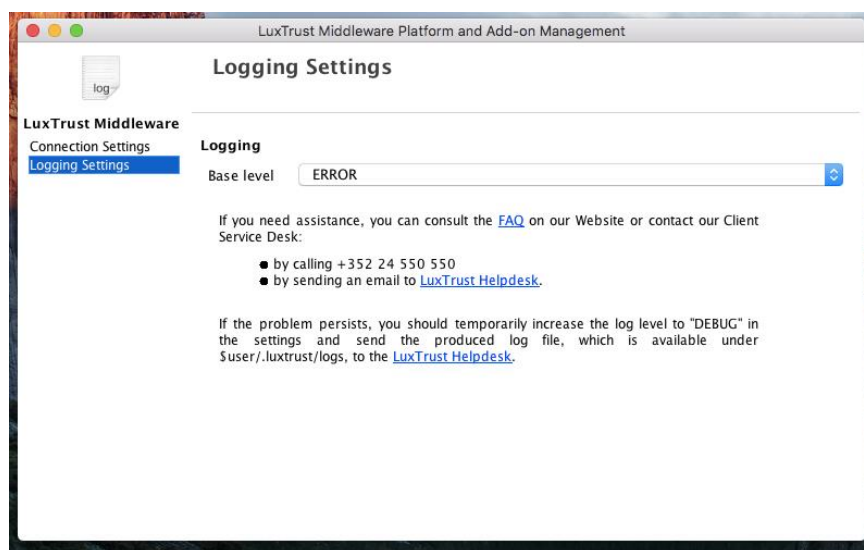
Please provide us this file: `/Users/$users/.luxtrust/logs/ChipGateway.log`

I.9 Configure the Debug Rapport (Debugging report)

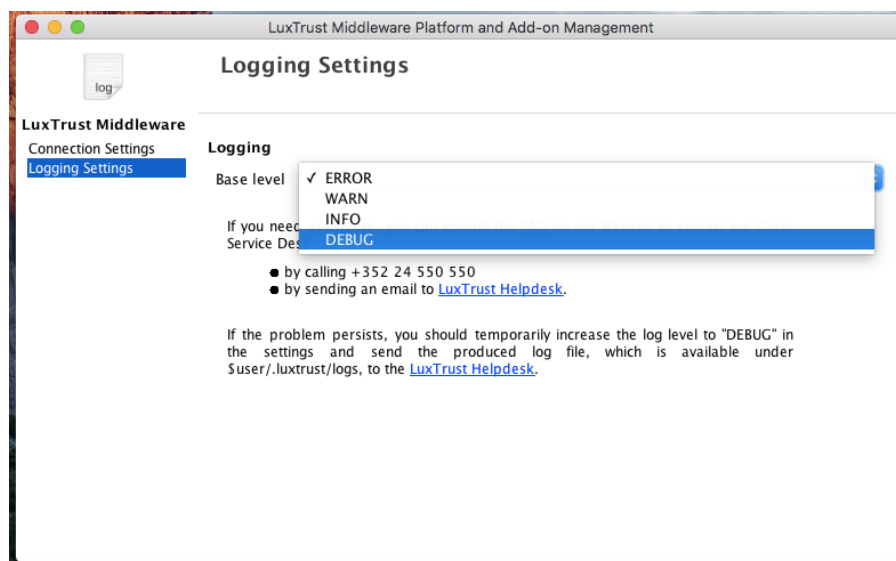
Click with the left mouse button on „Configuration“in the LuxTrust Middleware:



Please choose “Logging Settings”



In the Menu “ Logging Settings “ click on the drop down list and choose “ Debug “ and restart the action to get a more detailed Log File.

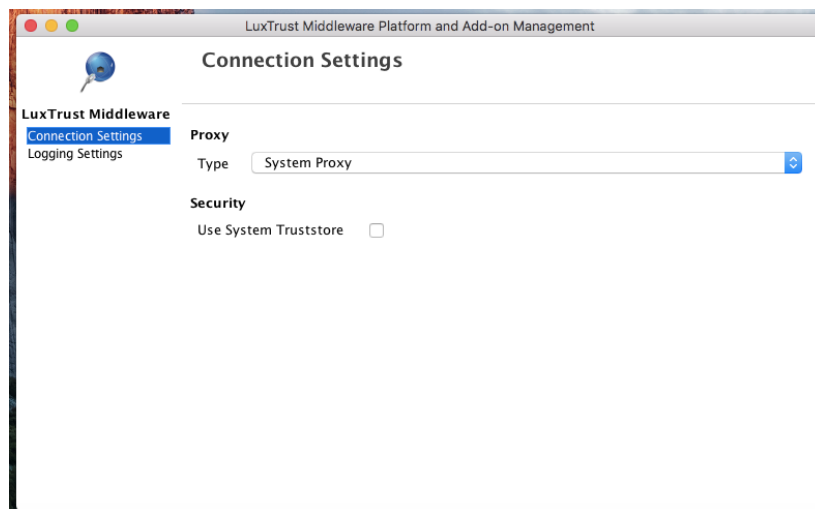


I.10 Configuration of the Proxy

Click with the left Mouse button on „Configuration“ in the LuxTrust Middleware:



Select in “Connection Settings” to configure the Proxy Server.



Click on the drop down list to open the different profiles and select the Profile you need. If you need help, please contact your IT Department.

