



# Installation Guide for the LuxTrust Middleware under Ubuntu 14.04 LTS 32bit and 64bit

v0.3

28/11/2016

**English**

## Disclaimer

This document may not be reproduced as a whole or parts of it without the prior written and explicit consent of LuxTrust S.A. Third party copyrights may exist for parts of this documentation. LuxTrust S.A. declines all responsibility for direct, indirect, special, incidental or consequential damages to hardware or other damages somehow related to or resulting from the execution of any advice given in this document. This document is provided “as is” and no provision is made in terms of fitness for a particular purpose or applicability. By making use of this document the user accepts using it to its own risk and understands that this document could not be provided without such limitations.

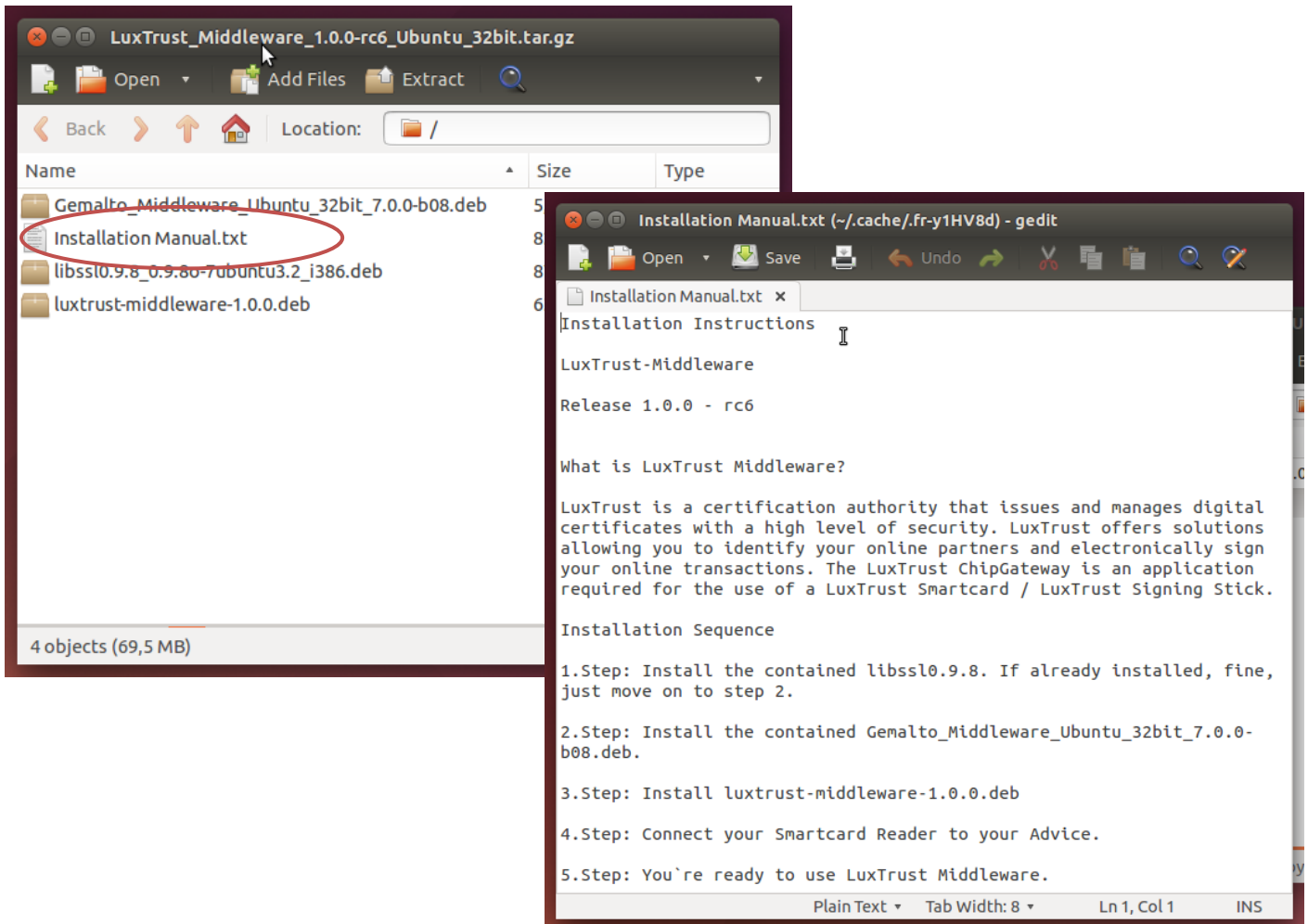
### I.1 Conditions

In order to use the LuxTrust Middleware, you need to have met the following system conditions:

- Ubuntu 14.04 LTS 32bit or 64bit  
[https://www.luxtrust.lu/en/product\\_page/61/#confs](https://www.luxtrust.lu/en/product_page/61/#confs)

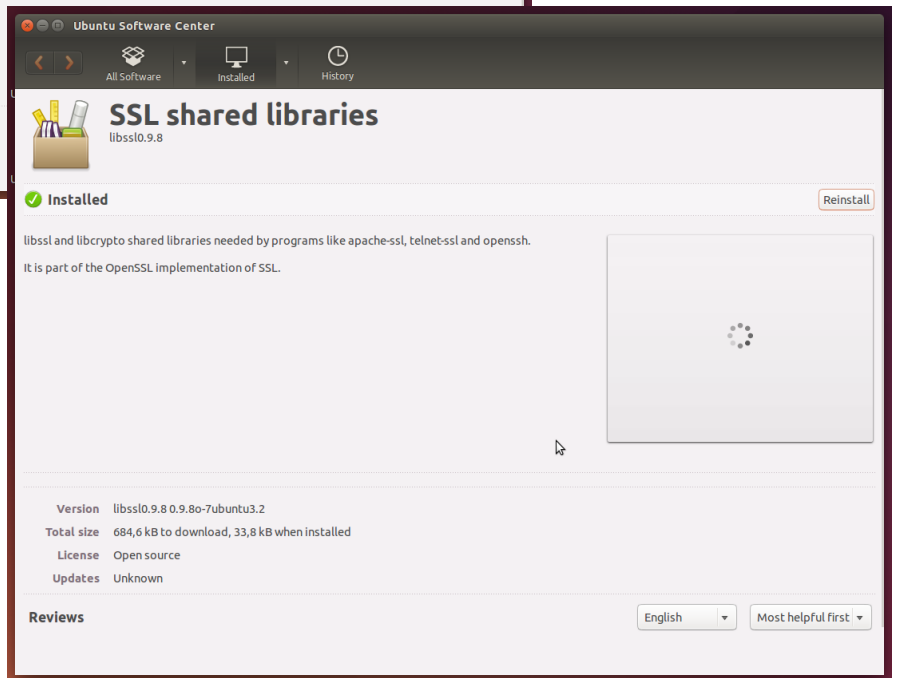
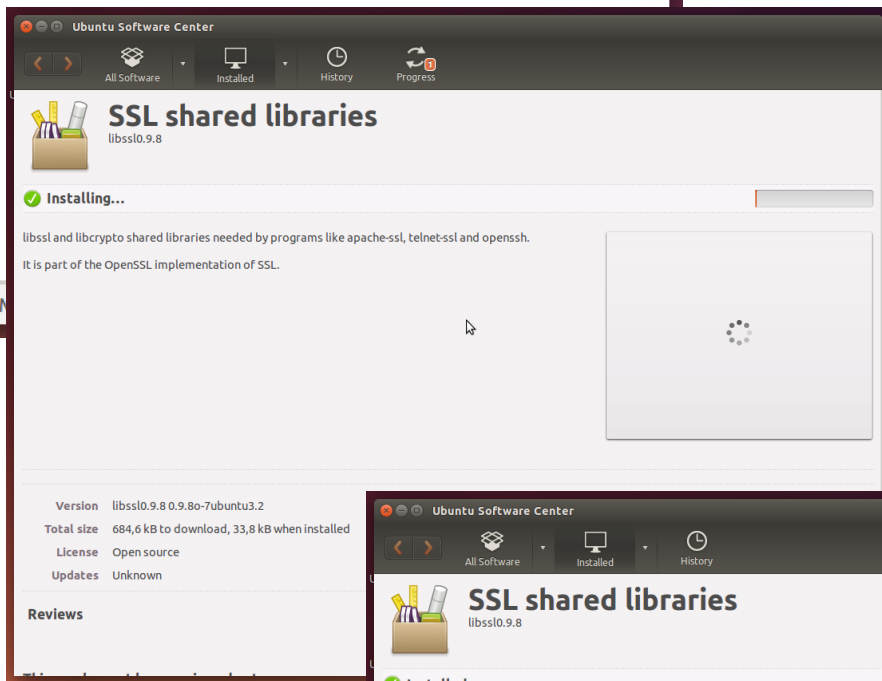
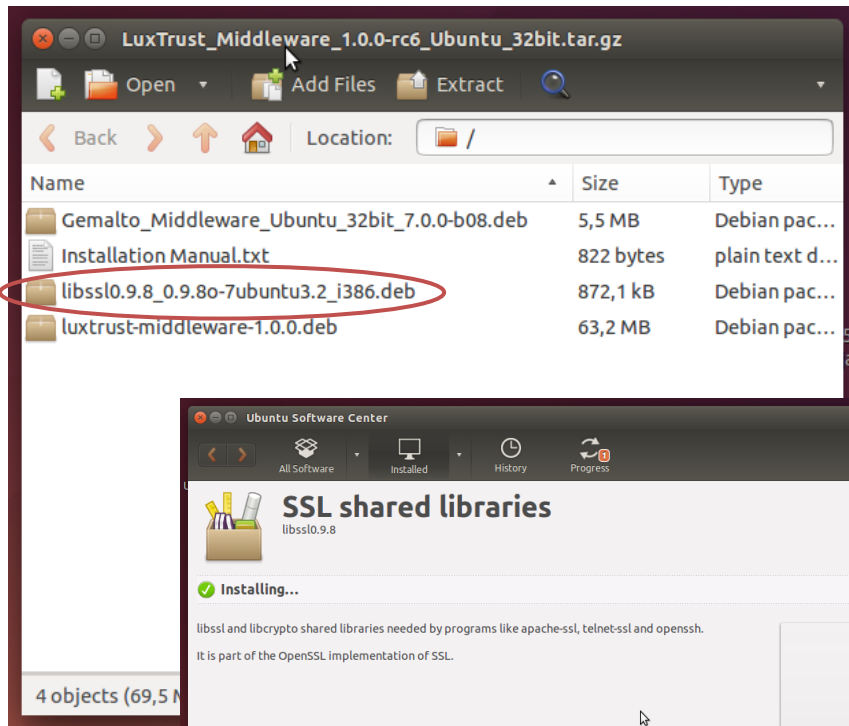
### I.2 Download of the LuxTrust Middleware

- Download the LuxTrust Middleware from **drivers.luxtrust.lu**.
- Then install the package depending on the version of your operating system. The LuxTrust Middleware is available in 2 Packages: **x86** and **x64**:
  - Unzip the content of the Package or leave it as-is
  - For installation details, please read the file “Installation Manual.txt”.



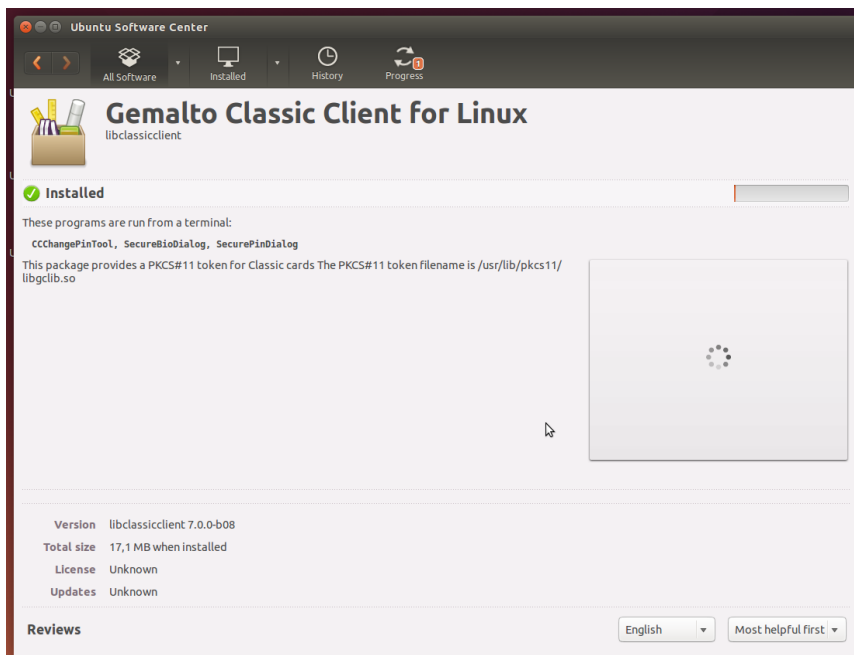
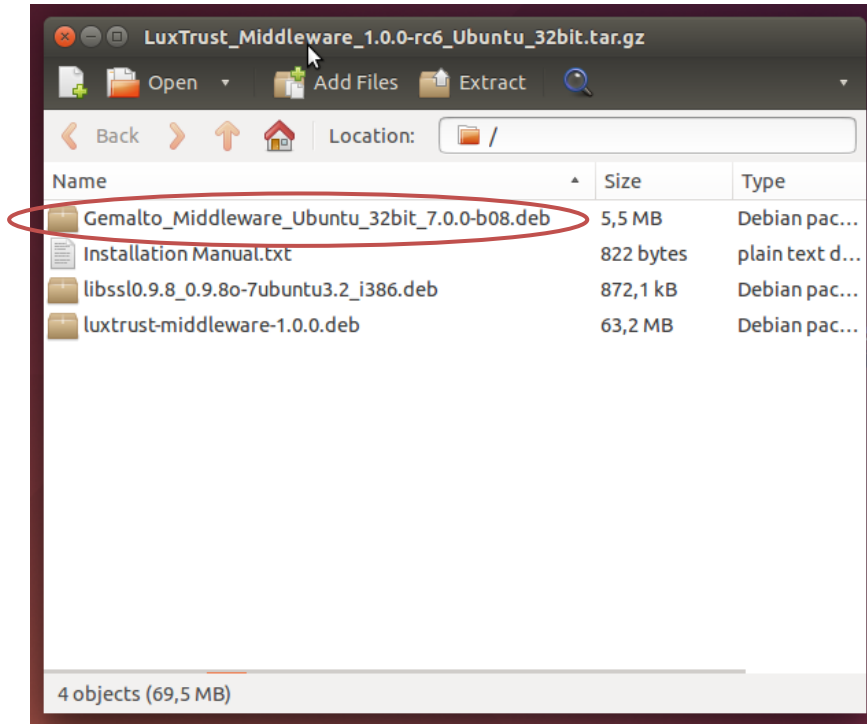
### I.3 Installation of the contained libssl0.9.8

- Double click on the libssl0.9.8.xxxx.deb file
- Click on “Install”



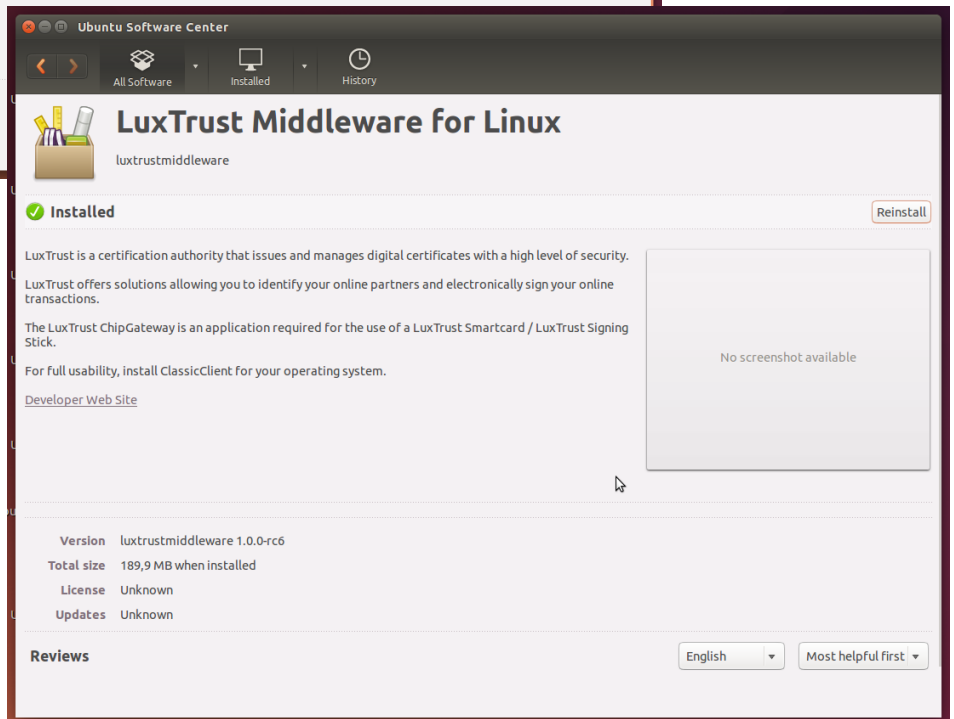
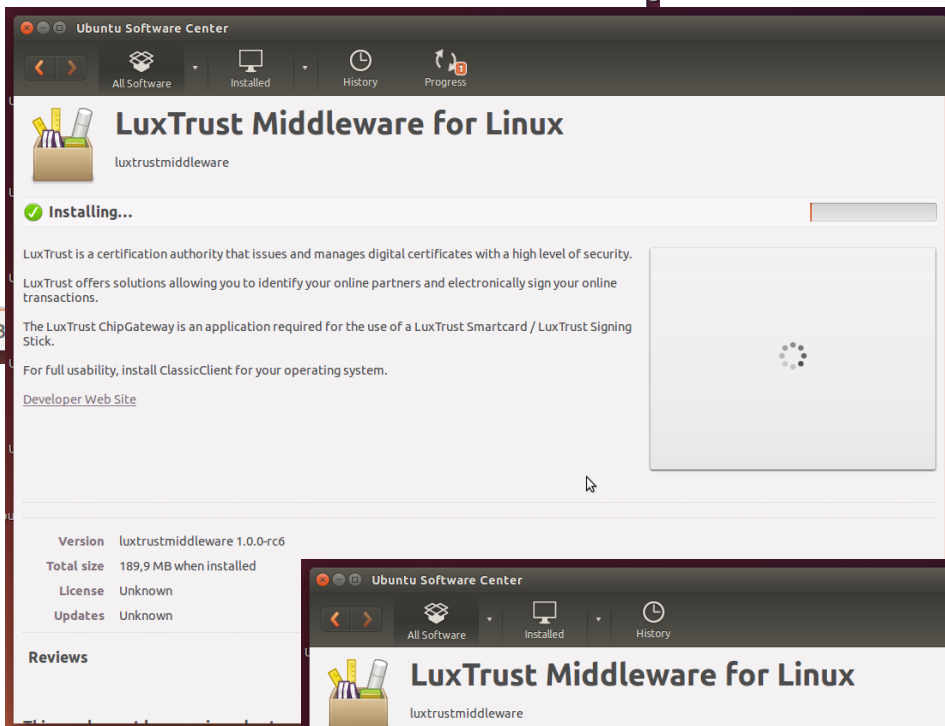
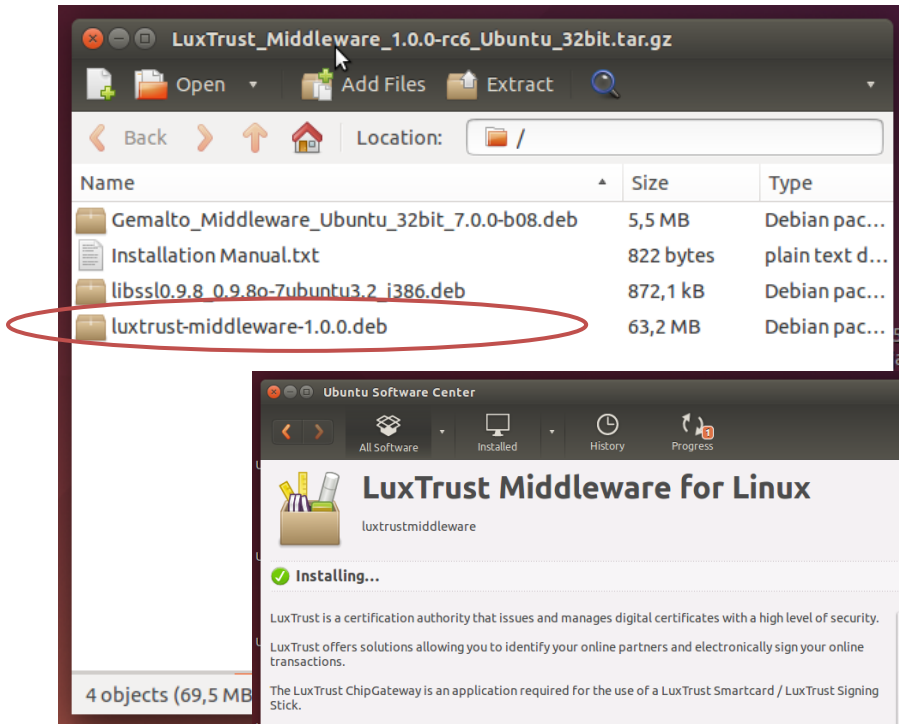
#### I.4 Installation of the contained Gemalto\_Middleware\_Ubuntu\_32bit\_7.0.0-b08.deb

- Double click on the Gemalto\_Middleware\_Ubuntu\_32bit\_7.0.0-b08.deb file
- Click on “Install”





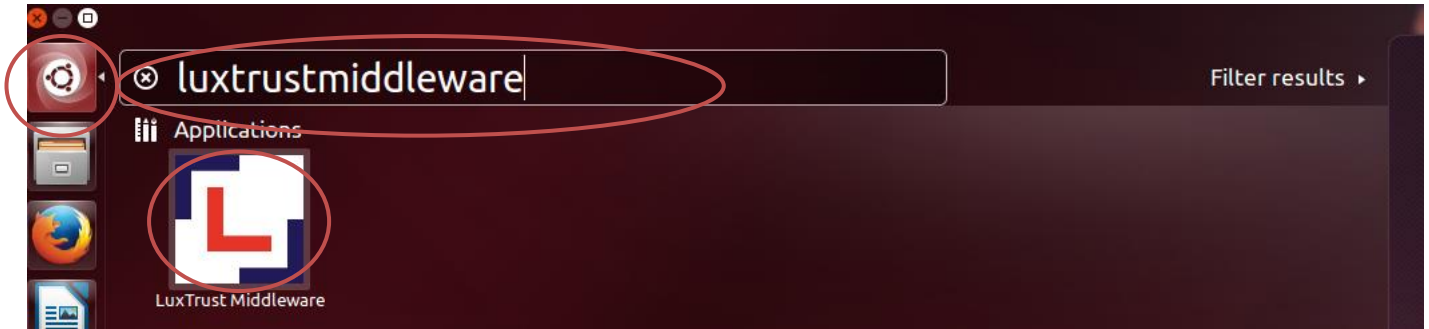
### I.5 Install the contained luxtrust-middleware-1.0.0.deb:


- Double click on the luxtrust-middleware-1.0.0.deb file
- Click on “Install”



### I.6 Detection of a Smartcard / Signing stick

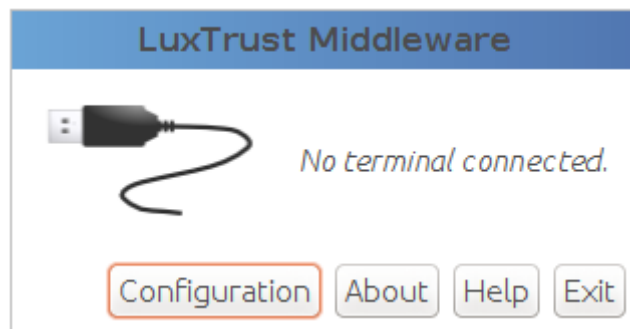
- Click on the Home Button. 
- Type luxtrustmiddleware in the search field.
- Double click on the LuxTrust Middleware icon. 




- Click on the symbol  in the Ubuntu task bar to start the LuxTrust Middleware.



- No LuxTrust Smartcard or Signing Stick has been connected to the computer yet (“No terminal connected.”).



- Insert your LuxTrust Smartcard in the card reader or your Signing Stick in the USB port of your computer.
- Then click on the symbol  in the task bar to start the LuxTrust Middleware.

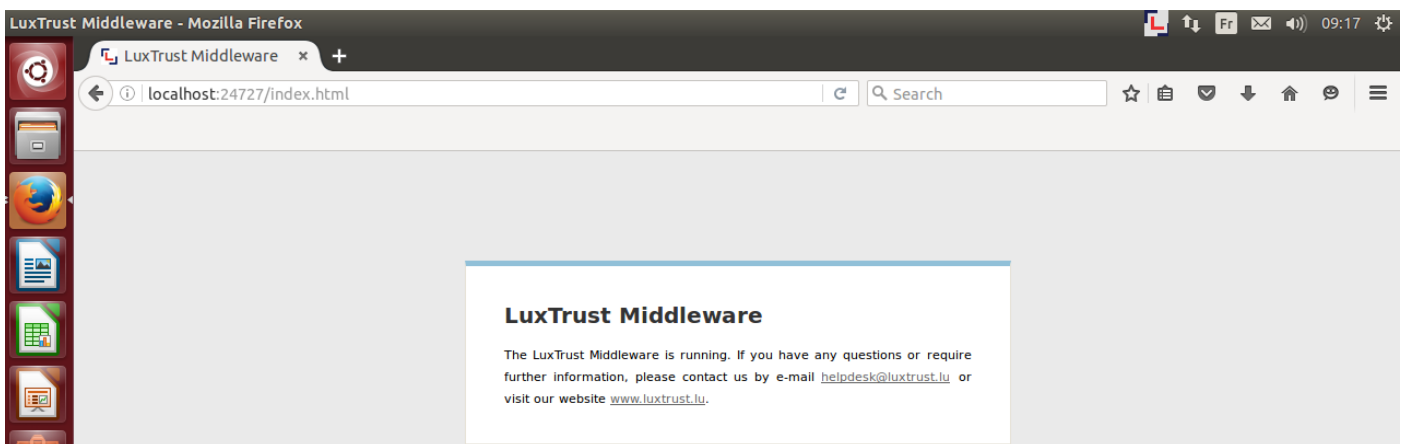


### Installation LuxTrust Middleware – Ubuntu



- Check if the LuxTrust Middleware is running by typing in your internet browser

<http://localhost:24727/index.html>




## I.7 Error logs / debugging

If errors occur please send the file “ChipGateway.log” to us by mail to [helpdesk@luxtrust.lu](mailto:helpdesk@luxtrust.lu) .

Please provide us this file: `/home/$users/.luxtrust/logs/ChipGateway.log`

- ➔ The file path is dependent on your session / login (\$users). So please adapt the path accordingly!

### I.8 Configure the Debugging Report

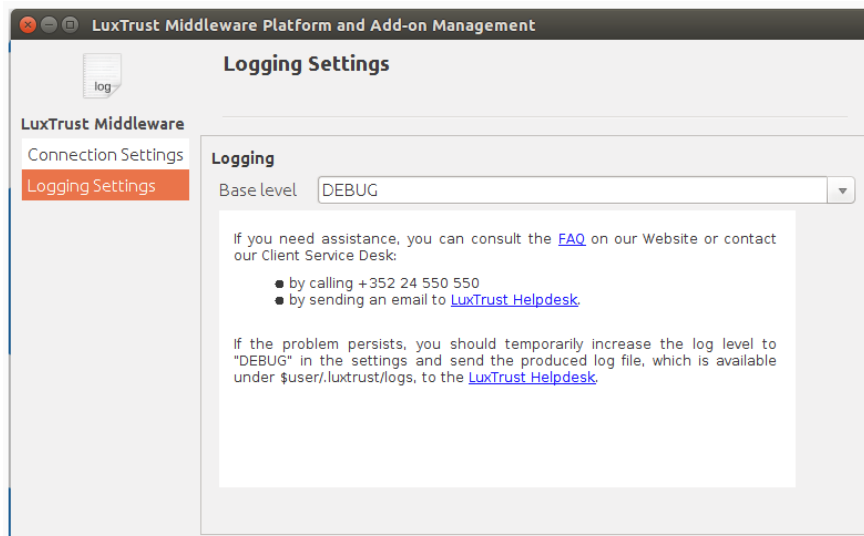
Then click on the symbol  in the task bar to start the LuxTrust Middleware.



Then click with right Mouse Button on “Configuration” in the LuxTrust Middleware:




Choose “Logging Settings”



In this Menu, click on the drop down list and select “Debug” and restart the action again to get a more detailed report.



### I.9 Configuration of the Proxy

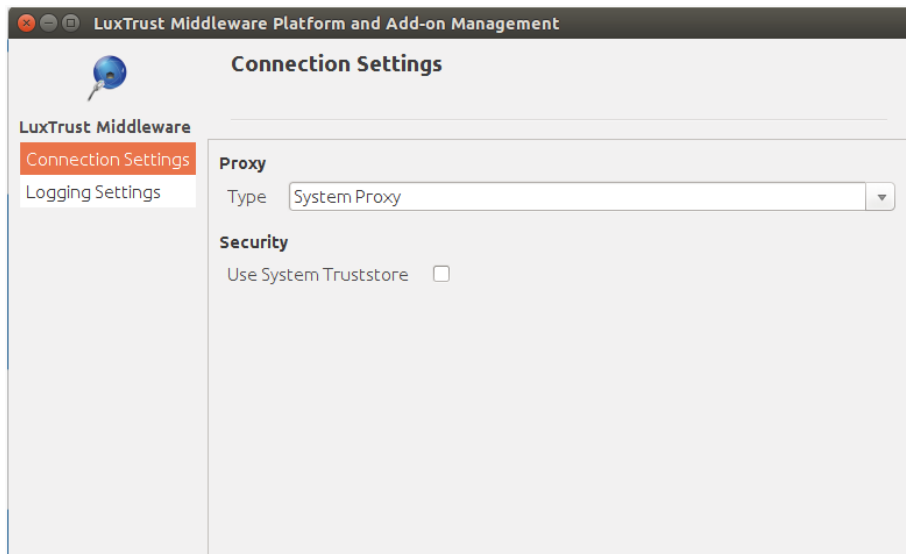
Then click on the symbol  in the task bar to start the LuxTrust Middleware.



Then click with right Mouse Button on “Configuration” in the LuxTrust Middleware:



Choose the Menu “Connection Settings” to configure the Proxy Server.



Use the drop down list to select the needed configuration. If you need assistance, please contact your IT Department.